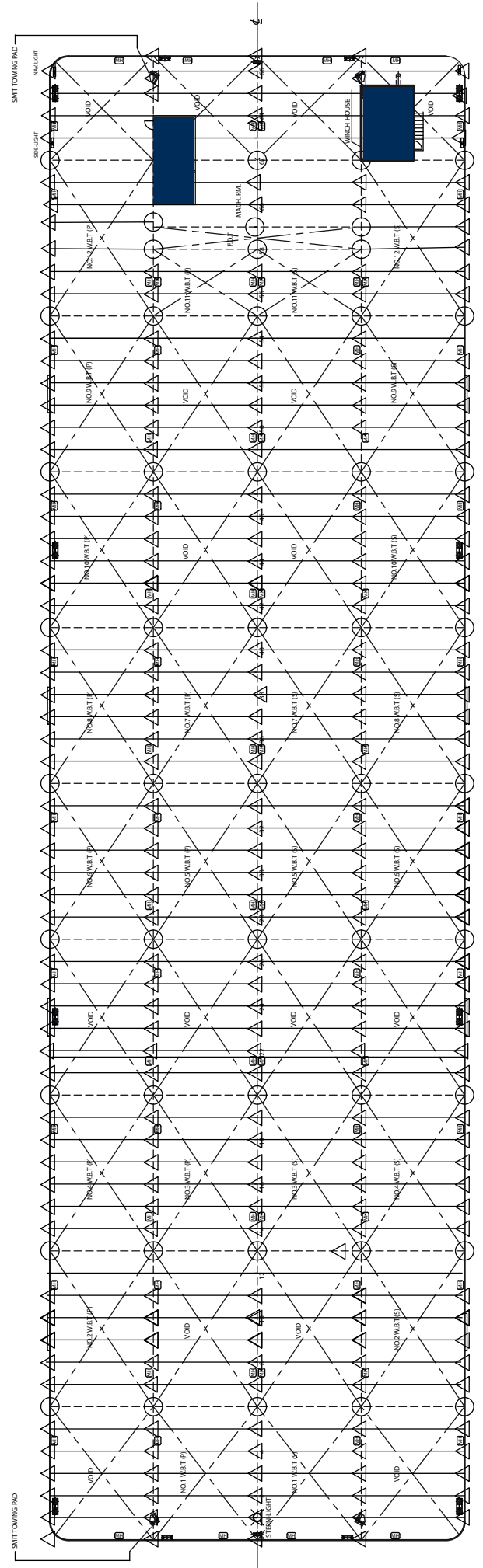
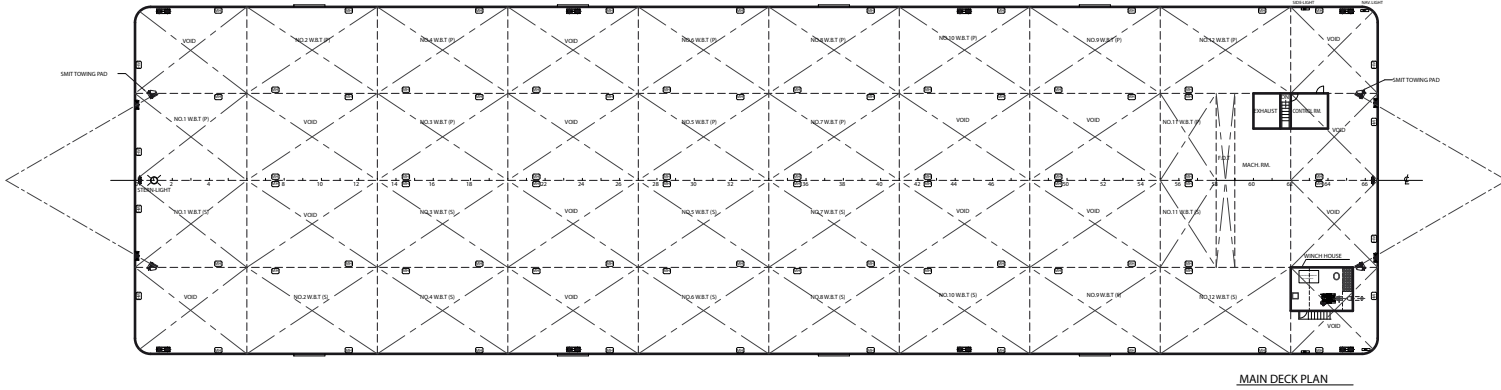
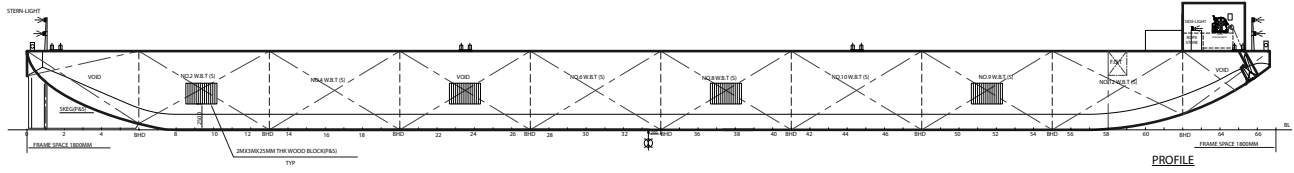


load distribution



MAIN DECK PLAN

elevation and plan



specifications

Particulars should be taken as indicative and are believed to be correct but are subject to change and do not constitute a warranty

Main details:

Class	ABS +100A1 Barge
Built	China 2007
Registry	Bergen, Norway
Official No.	LG2019
GT	8,191
NT	2,457

Technical details:

Length overall	120.0m
Beam	33.5m
Depth	7.6m
Max draught	5.7m
Dwt on max draught	17,400 tonnes
Deck area	3,735m ²
Frame spacing	1,800mm
Deck loading	20 tonnes per sq meter
Point loads	Up to 400 tonnes

Equipment:

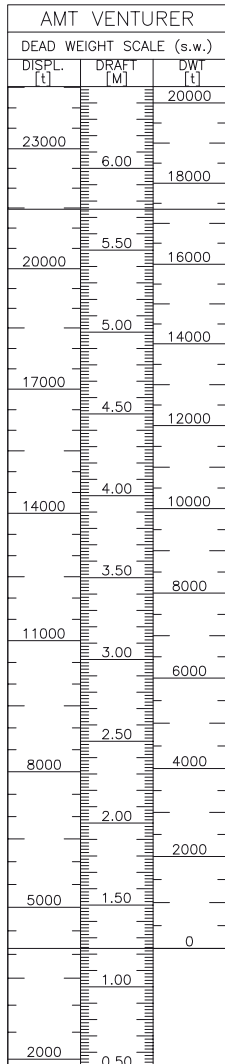
Ballast pumps	2 KSB pumps with max rated capacity of 1,800m ³ /hour each
Machinery	2 Volvo engines each of 350 hp 55 hp engine driving harbour generator

Ballast system:

Valves are operated from pumproom
Ballasting and deballasting is effected using the pumps

Mooring system:

1 hydraulically driven anchor winch with bow anchor of 7.4 tonnes



FULL LOAD CONDITION

DRAFT 5.75 m A B
DWT 17354 t

LIGHT CONDITION

DRAFT 1.23 m
DISPL 4113 t



anchor
marine transportation ltd

48 Bedford Square
London WC1B 3DR
tel +44 207 908 4550
fax +44 207 637 4057
anchor@amtbarages.com
www.amtbarages.com