

# CARLO MARTELLO



## specifications

particulars of unit and inventory believed to be correct but subject to change

### Port of Registry

Catania number 38 International Register

### Call Signal

IBCO

### Flag

Italian

### IMO Number

9442275

### Year Built

2009

### Builder

Cantiere Rossetti Marino SpA - Ravenna (Italy)

### Classification

RINA

### Class

C<sub>8</sub>, AH Tug, Salvage Tug, Fire Fighting Ship 1, Water Spraying, Unrestricted Navigation

### Rina Registration

85068

### Speed

Maximum Speed

14,5 Knots

Service Speed

12 Knots

### Dimensions

Lenght overall

55,40 m

Lenght b.p.

48,40 m

Breadth mld.

15,50 m

Depth main deck

7,00 m

Design draft

5,20 m

Max operation draft

5,80 m

Draft

6,20 m

Gross Tonnage

1658 tons

Net Tonnage

497 tons

### Tonnage - Capacities

Ballast water

240 m<sup>3</sup>

Fresh water

151 m<sup>3</sup>

HFO, incl. settling and service tanks

1255 m<sup>3</sup>

Fuel oil, incl. service tanks

(Marine Gas oil MGO)

191 m<sup>3</sup>

Deck Cargo

500 T

Cargo deck area

300 m<sup>2</sup>

Deadweight at max operation draught 5,80m

1400T

### Navigation Equipment

Radar

• 1 JRC 12ft S Band Model JMA-3392F-SA 120 Nm

• 1 JRC 9ft X Band Model JMA-9922F-6XA 120 Nm

Echo Sounder

1 JRC JFE 582

Gyro Compass

2 Plath Navigat X MK2

Auto Pilot

1 Plath Navpilot V/HSC - G

Radio Telephone

1 Skanti TRP 1250S

VHF

2 Skanti VHF 1000 DSC

Mobile VHF

4 Motorola Mod. GP 340

Mobile VHF/GMDSS

3 Sailor Mod. Sp. 3300

GPS

2 x GPS JRC NWZ 4570

EPIRB

Jotron Tron 40S

SART 2 Rescue Sart 9.2-2.9.5 GHz - Serpe - Iesm

Navitex

JRC NCR 333

Inmarsat

VSAT Platform

• SES Standard "C" Thrane & Thrane Mod. TT3020C

SAT Phone

• SES Standard "F" (Fleet 77) Thrane & Thrane

Mod. 3084A

Mobile Phone

GSM

GMDSS Station

A1 + A2 + A3

Joystick

Pascan (Roll Royce)

### Deck & Towing Equipment

Towing Winch

• 1 Brattvag double Drum Towing/AH winch

• Waterfall Type SL120W/BSL120W

Cable lifters

• 2 for 3" rig chains on part side and starboard side outside the AH Drum

Drums

1 x Winches

Drums Capacity Steel Rope Ø 64mm x 1200mt

Control RRM Towcon system from wheel and local

Stern Roller 1 Dimension 3,00 mt x 2,00 mt Ø

Capstans

2 Hydraulic

Work Boat

1 Rescue boat Narsafe type

Tow Wire

• 1 x 1200 mt x 64 mm on tow winch

• 1 x 1200 mt x 64 mm in drum on upper deck

• 1 x 1200 mt x 64 mm in drum in store

Tow Pins

2

Karm Forks

2

Tugger Winches

2

Pop up Pins

2

Brake holding load

• 300 Tons on towing Drum's 1 Layer

• 300 Tons on AH Drum's 1 Layer

### Machinery

Main Engines

• 2 Wartsila 8L32 Diesel 4000kw each at 750 rpm

HFO IF380cst

Ballard Pull

155,99 tons certified

BHP

10.880 BHP

Propellers

• 2 RPM Ulstein Propeller Plant Diam. 3600mm, 4

Blades

Rudders

Flap type

Bow Thruster

• 2 RRM propulsion Tunnel Thruster TT1300 DPN

350 kW each electric driven

Generators

• 2 Shaft Morelli MJR 400 LB4 1250 KVA each

• 2 Volvo Penta D12D-A KC/HC.M534C1, 438 KVA

each

• 1 Volvo Penta TAMD 74A-KC/UC.M274H1, 205KVA

• 1 Volvo Penta D5A + RC/UC.M274C1, 85 KVA

Voltage current Able to supply 440V/60Hz

### Boilers, Steam & Gas Generators

MGO fired heater

• 2 with 300 kW Heating capacity 14m<sup>3</sup>h thermal

oil flow

Exhaust gas economiser

• 2 with 300 kW Heating capacity 14m<sup>3</sup>h thermal

oil flow

### Additional Equipment

1 Provision room

2 Frigorifics

3 Cold Stores

4 Liferats for total number 100 persons

1 Deck crane of 2,5 at 16m

### Accommodation

Total 24 comfortable berths fully airconditioned

6 single cabin for officers

7 double cabins for crew

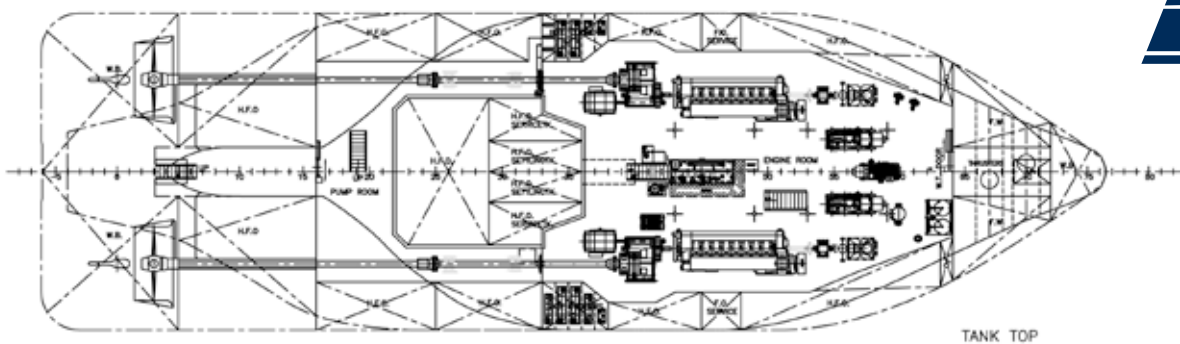
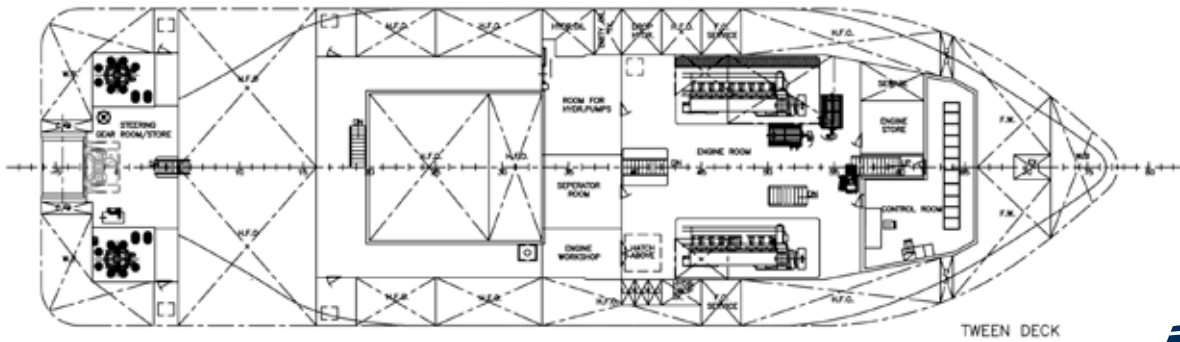
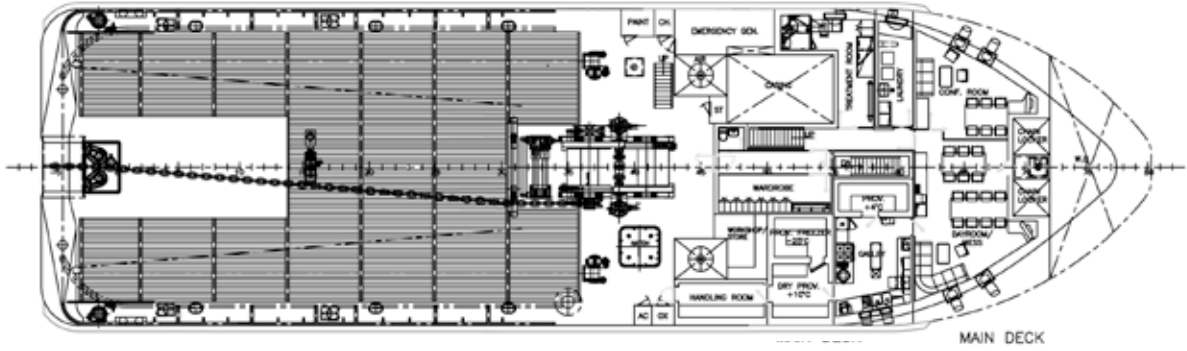
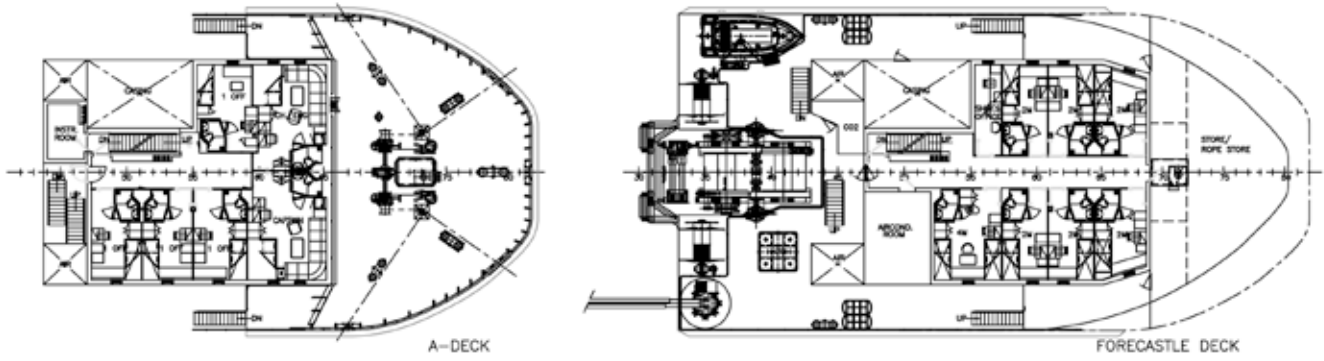
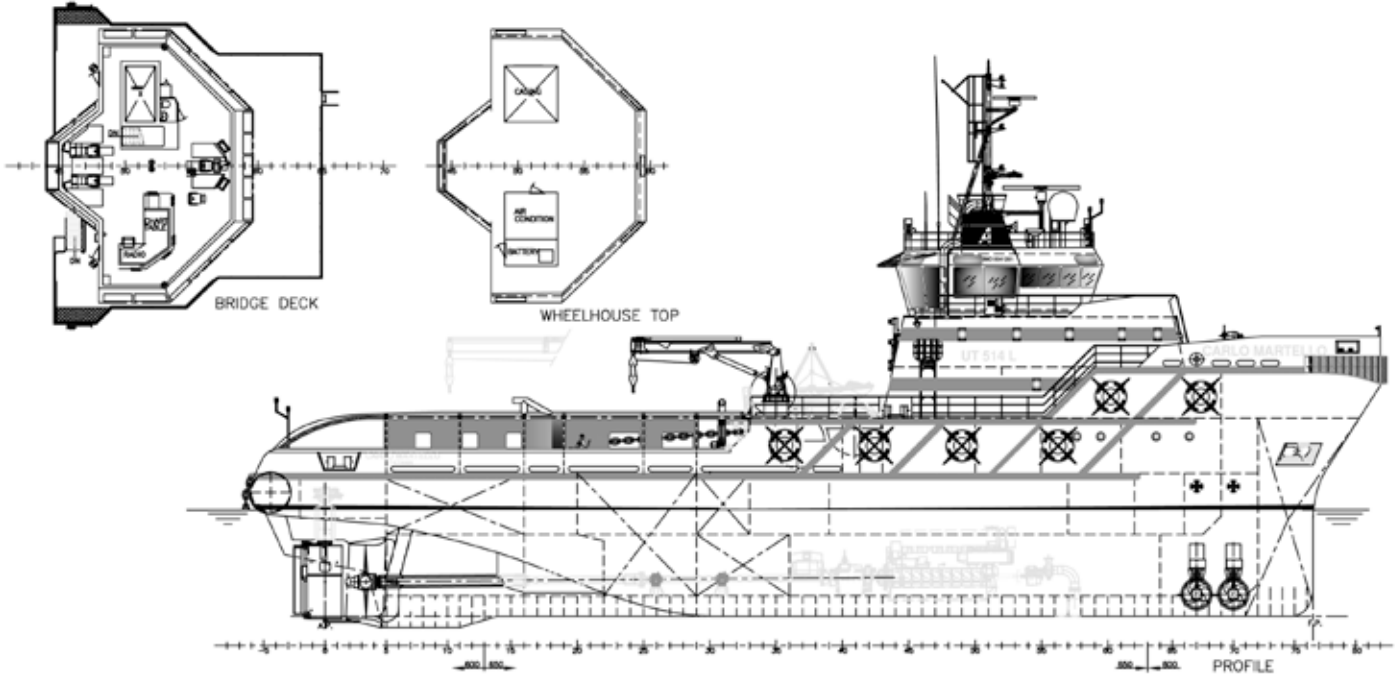
1 quadruple cabin for crew

Cabin current

220 V

### E&EO

# CARLO MARTELLO



71, via marina di ponente  
 96011 augusta (sr) italia  
 telefono +39 0931 527411  
 fax +39 0931 975676  
 telex 05194078250

www.augustea.com  
 Sales-Tugs@augustea.com